

The TURRET 400/PTI is a Peltier-based, temperature-controlled, 4-position sample changer for use in a PTI Spectrofluorometer.

- Rapid, precise control over an extended range of temperatures
- Highly uniform temperature in each cuvette
- Fully automated through the PTI software package
- Calibrated using a NIST-traceable thermometer
- Ready to install, including rear utility panel
- Variable speed magnetic stirring for each cuvette
- Dry gas purge
- Thermometer probe input
- TC 425 Temperature Controller included

Specifications:

• Temperature Range*	-25 °C to +105 °C
• Temperature Precision	± 0.02 °C
• Optical Port Dimensions	10 mm high x 10 mm wide
• Probes Accepted	Series 400 or Series 500
• Cuvettes Accepted:	
Standard Cuvette Size	12.5 mm x 12.5 mm O.D.
Cuvette Adapters Available	3x3 mm ² , 4x4 mm ² , 5x5 mm ²
Microcuvette z Height	8.5 mm (special order 15 mm)

* Operation below the ambient dew point temperature requires dry gas purge. Operation below -10 °C requires dry gas purge and pre-cooled circulating fluid within 25 °C of the desired temperature.

Components included in each purchase

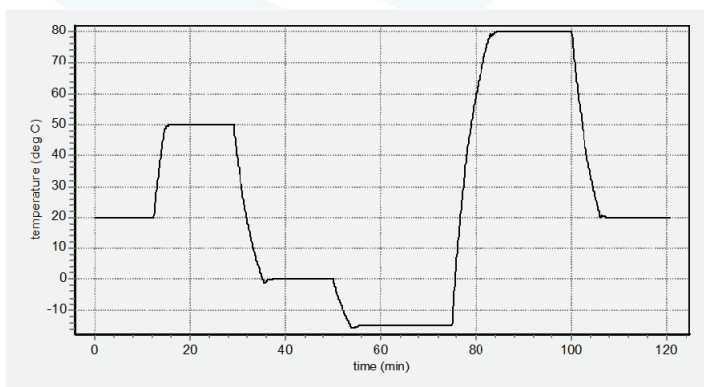
- TURRET 400 Cuvette Holder
- TC 425 Temperature Controller
- Performance Plot and Calibration Data
- Magnetic Stir Bars, Tubing, Quick Disconnect Fittings, Cables, Optical Slits, Opaque Lid
- Utility Access Panel (replaces panel on rear of PTI instrument)



TC 425 Temperature Controller

Optional Components available

- APOST-4 Accessory Post
APOST-4 is a plastic post and support clip that may be inserted in the center of the top of the TURRET 400 and used to hold tubes, probes and other hardware for special measurements.
- ADPT 3x3, ADPT 4x4, ADPT 5x5 Cuvette Adapters
Cuvette adapters permit the use of small square cuvettes.
- T-App Temperature Application Software
T-App permits external computer control of the TC 425 Temperature Controller, plotting cuvette holder or probe temperatures vs. time, and enabling programming for functions such as temperature ramping.
- BATH 100 Circulator
The BATH 100 Circulator is a submersible pump, bucket, tubing and fittings used to circulate water or other fluid through the Peltier heat exchanger to draw out heat when the temperature is lowered.



Each unit is provided with a performance plot.

Seattle
18338 Corliss Avenue N
Shoreline, WA 98133

Spokane
22910 East Appleway Ave., Suite 4
Liberty Lake, WA 99019-8606

**Serving the global scientific
community since 1993**

phone: (509) 624-9290
fax: (509) 624-9488
email: quantum@qnw.com