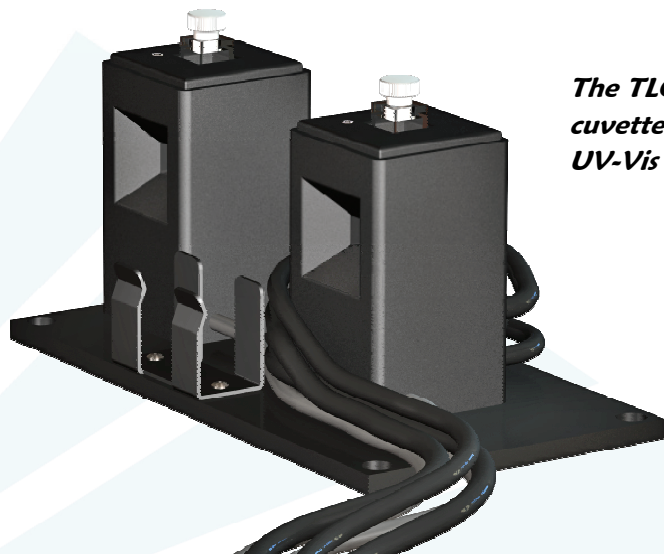
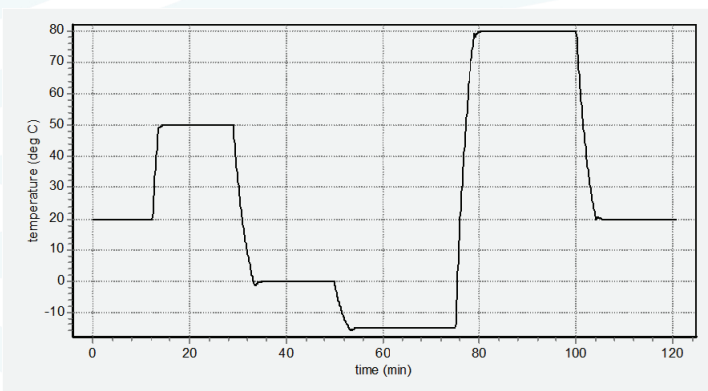


Dual Cuvette Holder for the Cary 100-300



The TLC 42/Cary300 is a Peltier-based temperature-controlled cuvette holder for the Agilent Cary 100, Cary 200 or Cary 300 UV-Vis dual-beam Spectrophotometer.

- Precise, independent temperature control for both the sample and reference cuvettes.
- Calibrated using a NIST-traceable thermometer
- Includes base for mounting in the Cary 300 and a utility panel for connection of electric, water and gas
- Variable speed magnetic stirring
- Dry gas purge
- Thermometer probe input
- TC 225 Temperature Controller included



Each unit is provided with a performance plot.

Components included in each purchase

- TLC 42 Cuvette Holder
- TC 225 Temperature Controller
- Performance Plot and Calibration Data
- Magnetic Stir Bars, Tubing, Cables, Optical Slits, Opaque Lids
- T-App Temperature Application Software
T-App permits external computer control of the TC 225 Temperature Controller, plotting cuvette holder or probe temperatures vs. time, and enabling programming for functions such as temperature ramping.
- BATH 100 Circulator
The BATH 100 Circulator is a submersible pump, bucket, tubing and fittings used to circulate water or other fluid through the Peltier heat exchanger to draw out heat when the temperature is lowered.



TC 225 Temperature Controller

Specifications:

- Temperature Range* -40 °C to +105 °C
- Temperature Precision ± 0.02 °C
- Optical Port Dimensions 10 mm high x 10 mm wide
- Probes Accepted Series 400 or Series 500
- Cuvettes Accepted:
 - Standard Cuvette Size** 12.5 mm x 12.5 mm O.D.
 - Microcuvette z Height 8.5 mm (special order 15 mm)

* Operation below the ambient dew point temperature requires dry gas purge. Operation below -10 °C requires dry gas purge and pre-cooled circulating fluid within 25 °C of the desired temperature. Operation below -25 °C requires the optional WJ-40 Windowed Jacket (see below), dry gas purge and pre-cooled circulating fluid.

**A wide variety of acceptable cells of these outside dimensions, including macro, micro, semi-micro and ultra-micro cells, are available from cuvette manufacturers.

Optional Components available

- APOST-1 Accessory Post
APOST-1 is a plastic post and support clip that may be inserted in the top of either cuvette holder and used to hold tubes, probes and other hardware for special measurements.
- WJ-40 Windowed Jacket
The WJ-40 is a plastic cover that can be used on the sample and reference cuvette holders, that holds four 1-inch diameter fused silica windows, permitting the passage of light. The WJ-40 provides insulation and prevents condensation on the cuvette when operating at low temperatures.