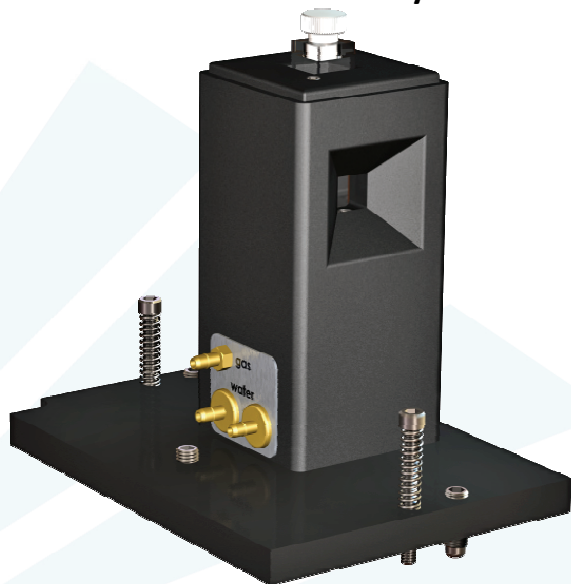
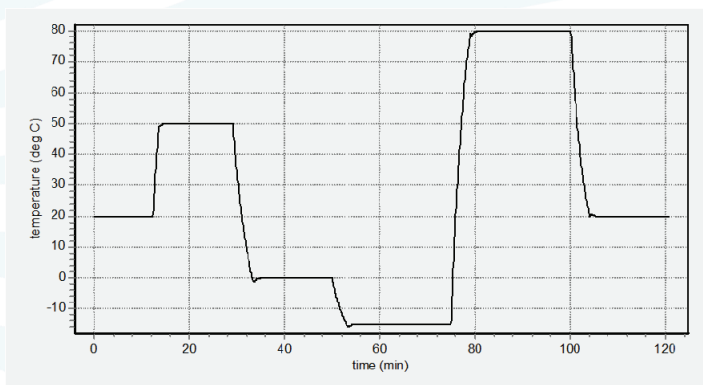


Cuvette Holder for the Cary 5000



The TLC 40/Cary5000 is a Peltier-based temperature-controlled cuvette holder which mounts in the sample beam of the Agilent Cary 4000, Cary 5000, or Cary 6000i UV-Vis-NIR Spectrophotometer.

- Rapid, precise control of the sample over a wide range of temperatures
- Calibrated using a NIST-traceable thermometer
- Includes base for mounting in the Cary 5000 and a utility panel for connection of electric, water and gas
- Variable speed magnetic stirring
- Dry gas purge
- Thermometer probe input
- TC 125 Temperature Controller included



Each unit is provided with a performance plot.

Components included in each purchase

- TLC 40 Cuvette Holder
- TC 125 Temperature Controller
- Performance Plot and Calibration Data
- Magnetic Stir Bar, Tubing, Cables, Optical Slits, Opaque Lid
- T-App Temperature Application Software
T-App permits external computer control of the TC 125 Temperature Controller, plotting cuvette holder or probe temperatures vs. time, and enabling programming for functions such as temperature ramping.
- BATH 100 Circulator
The BATH 100 Circulator is a submersible pump, bucket, tubing and fittings used to circulate water or other fluid through the Peltier heat exchanger to draw out heat when the temperature is lowered.



TC 125 Temperature Controller

Specifications:

- | | |
|---------------------------|---------------------------------------|
| • Temperature Range* | -40 °C to +105 °C |
| • Temperature Precision | ± 0.02 °C |
| • Optical Port Dimensions | 10 mm high x 10 mm wide |
| • Probes Accepted | Series 400 or Series 500 |
| • Cuvettes Accepted: | |
| Standard Cuvette Size** | 12.5 mm x 12.5 mm O.D. |
| Microcuvette z Height | 8.5 mm (special order 15 mm or 20 mm) |

* Operation below the ambient dew point temperature requires dry gas purge. Operation below -10 °C requires dry gas purge and pre-cooled circulating fluid within 25 °C of the desired temperature. Operation below -25 °C requires the optional WJ-40 Windowed Jacket (see below), dry gas purge and pre-cooled circulating fluid.

Optional Components available

- APOST-1 Accessory Post
APOST-1 is a plastic post and support clip that may be inserted in the top of the TLC 40 and used to hold tubes, probes and other hardware for special measurements.
- WJ-40 Windowed Jacket
The WJ-40 is a plastic cover for the TLC 40 that holds two 1-inch diameter fused silica windows, permitting the passage of light. The WJ-40 provides insulation and prevents condensation on the cuvette when operating at low temperatures.