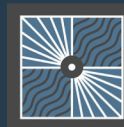
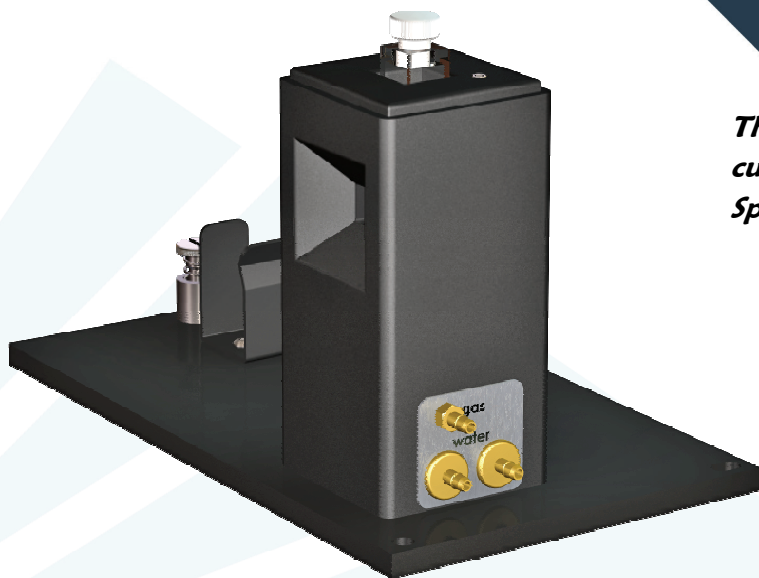


# TLC 40/Cary50

## Cuvette Holder for the Cary 50

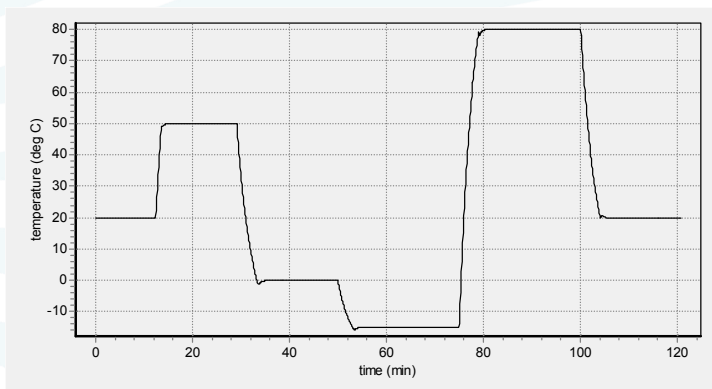


QUANTUM  
N · O · R · T · H · W · E · S · T



*The TLC 40/Cary50 is a temperature-controlled cuvette holder for use in a Agilent Cary 50 UV-Vis Spectrophotometer.*

- Rapid, precise control over a wide range of temperatures
- Calibrated using a NIST-traceable thermometer
- Includes base for mounting in the Cary 50
- Variable speed magnetic stirring
- Dry gas purge
- Thermometer probe input
- TC 125 Temperature Controller included



Each unit is provided with a performance plot.

### Specifications:

- Temperature Range\* -40 °C to +105 °C
- Temperature Precision ± 0.02 °C
- Optical Port Dimensions 10 mm high x 10 mm wide
- Probes Accepted Series 400 or Series 500
- Cuvettes Accepted:
  - Standard Cuvette Size 12.5 mm x 12.5 mm O.D.
  - Microcuvette z Height 8.5 mm (special order 15 mm or 20 mm)

\* Operation below the ambient dew point temperature requires dry gas purge. Operation below -10 °C requires dry gas purge and pre-cooled circulating fluid within 25 °C of the desired temperature. Operation below -25 °C requires the optional WJ-40 Windowed Jacket (see below), dry gas purge and pre-cooled circulating fluid.

\*\*A wide variety of acceptable cells of these outside dimensions, including macro, micro, semi-micro and ultra-micro cells, are available from cuvette

### Components included in each purchase

- TLC 40 Cuvette Holder
- TC 125 Temperature Controller
- Performance Plot and Calibration Data
- Magnetic Stir Bar, Tubing, Cables, Optical Slits, Opaque Lid
- T-App Temperature Application Software
- BATH 100 Circulator



TC 125 Temperature Controller

The BATH 100 Circulator is a submersible pump, bucket, tubing and fittings used to circulate water or other fluid through the Peltier heat exchanger to draw out heat when the temperature is lowered.

### Optional Components available

- APOST-1 Accessory Post  
APOST-1 is a plastic post and support clip that may be inserted in the top of the TLC 40 and used to hold tubes, probes and other hardware for special measurements.
- WJ-40 Windowed Jacket  
The WJ-40 is a plastic cover for the TLC 40 that holds two 1-inch diameter fused silica windows, permitting the passage of light. The WJ-40 provides insulation and prevents condensation on the cuvette when operating at low temperatures.

Seattle  
18338 Corliss Avenue N  
Shoreline, WA 98133

Spokane  
22910 East Appleway Ave., Suite 4  
Liberty Lake, WA 99019-8606

Serving the global scientific  
community since 1993

phone: (509) 624-9290  
fax: (509) 624-9488  
email: quantum@qnw.com