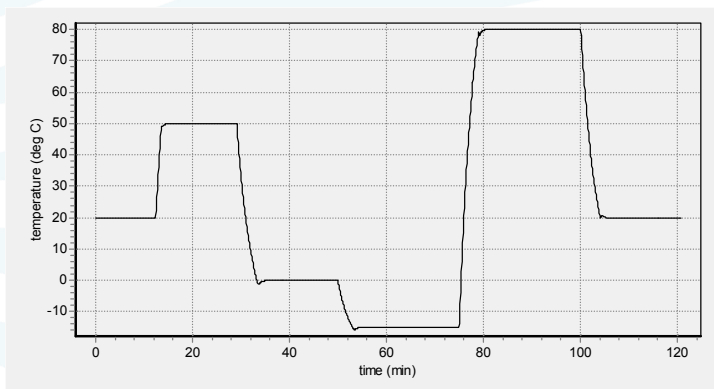


The TLC 40/8453 is a temperature-controlled cuvette holder for use in a Agilent 8453 UV-Visible Spectrophotometer.

- Rapid, precise control over a wide range of temperatures
- Calibrated using a NIST-traceable thermometer
- Includes base for mounting in the Agilent 8453 (and earlier versions: HP 8452 and HP 8453)
- Variable speed magnetic stirring
- Dry gas purge
- Thermometer probe input



Each unit is provided with a performance plot.

Specifications:

- Temperature Range* -40 °C to +105 °C
- Temperature Precision ± 0.02 °C
- Optical Port Dimensions 10 mm high x 10 mm wide
- Probes Accepted Series 400 or Series 500
- Cuvettes Accepted:**

Standard Cuvette Size	12.5 mm x 12.5 mm O.D.
Microcuvette z Height	8.5 mm

* Operation below the ambient dew point temperature requires dry gas purge. Operation below -10 °C requires dry gas purge and pre-cooled circulating fluid within 25 °C of the desired temperature. Operation below -25 °C requires the optional WJ-40 Windowed Jacket (see below), dry gas purge and pre-cooled circulating fluid.

**A wide variety of acceptable cells of these outside dimensions, including macro, micro, semi-micro and ultra-micro cells, are available from cuvette manufacturers.

Components included in each purchase

- TLC 40 Cuvette Holder
- TC 125 Temperature Controller
- Performance Plot and Calibration Data
- Magnetic Stir Bar, Tubing, Cables, Optical Slits, Opaque Lid
- T-App Temperature Application Software
T-App permits external computer control of the TC 125 Temperature Controller, plotting cuvette holder or probe temperatures vs. time, and enabling programming for functions such as temperature ramping.
- BATH 100 Circulator
The BATH 100 Circulator is a submersible pump, bucket, tubing and fittings used to circulate water or other fluid through the Peltier heat exchanger to draw out heat when the temperature is lowered.



TC 125 Temperature Controller

Optional Components available

- APOST-1 Accessory Post
APOST-1 is a plastic post and support clip that may be inserted in the top of the TLC 40 and used to hold tubes, probes and other hardware for special measurements.
- WJ-40 Windowed Jacket
The WJ-40 is a plastic cover for the TLC 40 that holds two 1-inch diameter fused silica windows, permitting the passage of light. The WJ-40 provides insulation and prevents condensation on the cuvette when operating at low temperatures.